

# returner



return  
systems

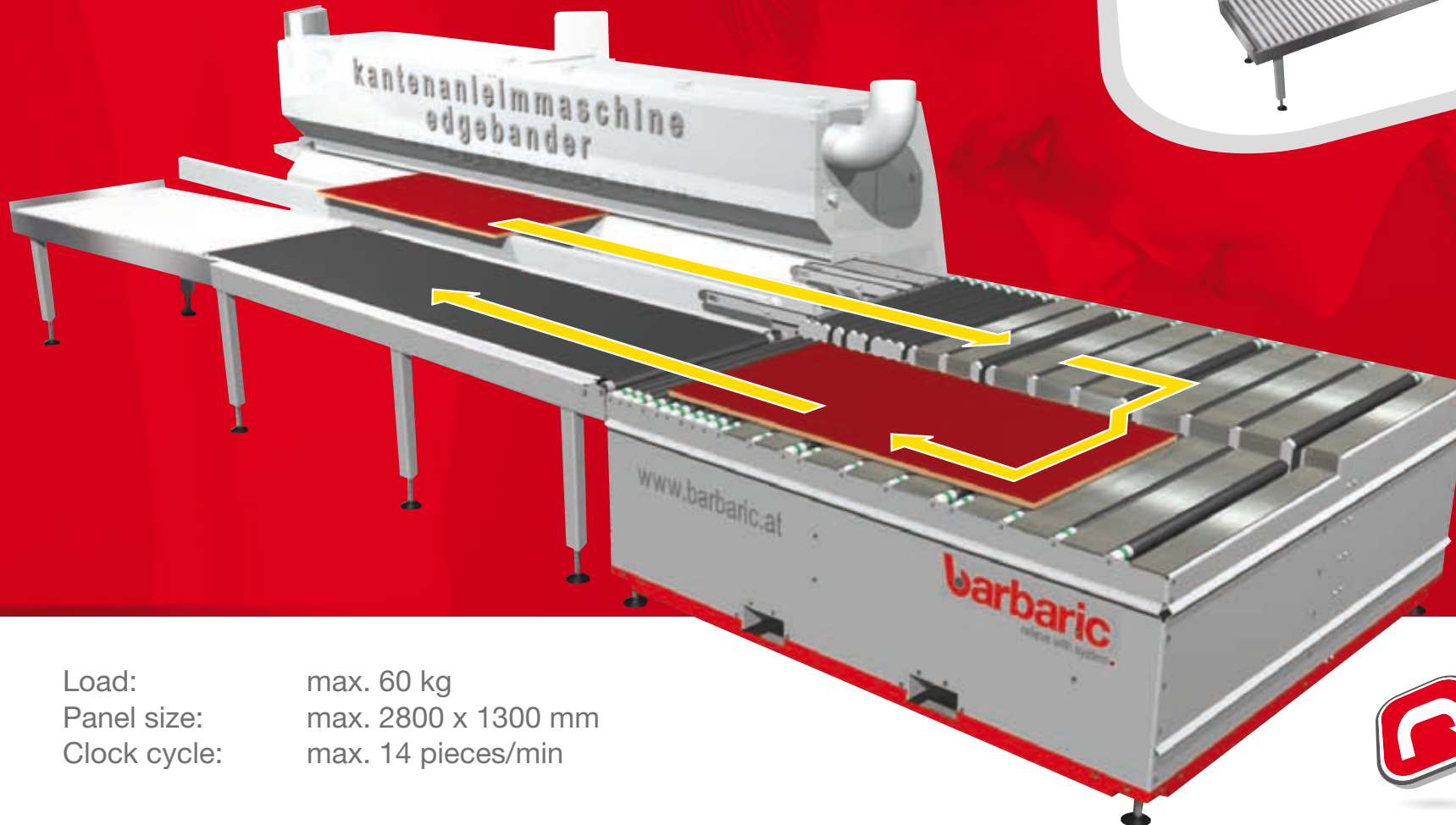
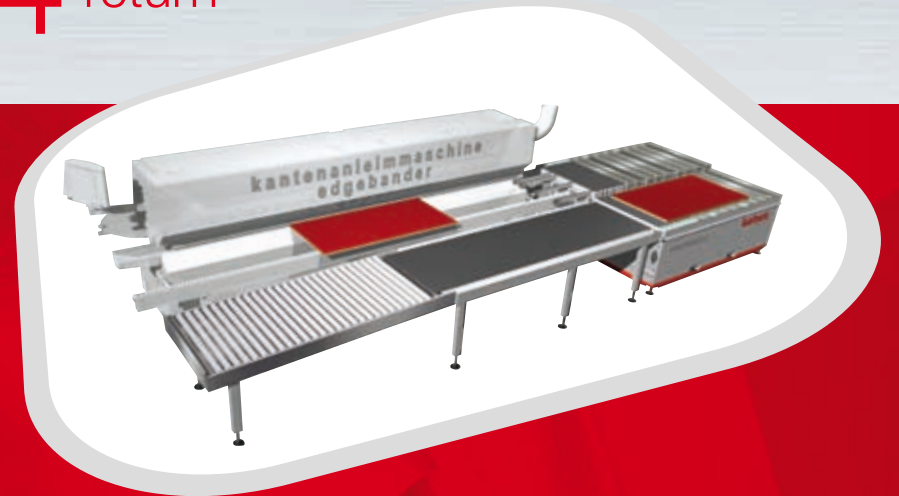
[www.barbaric.at](http://www.barbaric.at)

**barbaric**  
relieve with system.

# return 4

4 return

Return system for an edgebander



Load: max. 60 kg  
Panel size: max. 2800 x 1300 mm  
Clock cycle: max. 14 pieces/min



TRANSPORT



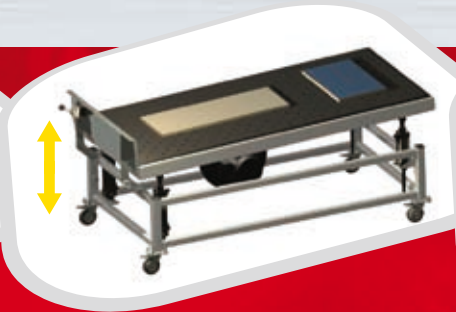
BRING BACK

2/3 return

# return



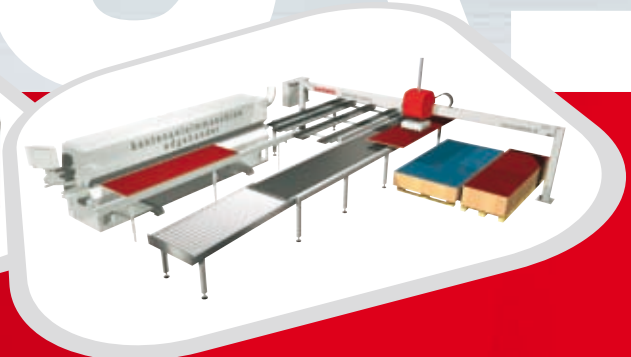
>> Screen  
user-friendly 17" touchscreen



>> Lifting table  
air cushion table  
for an easier charging of the parts

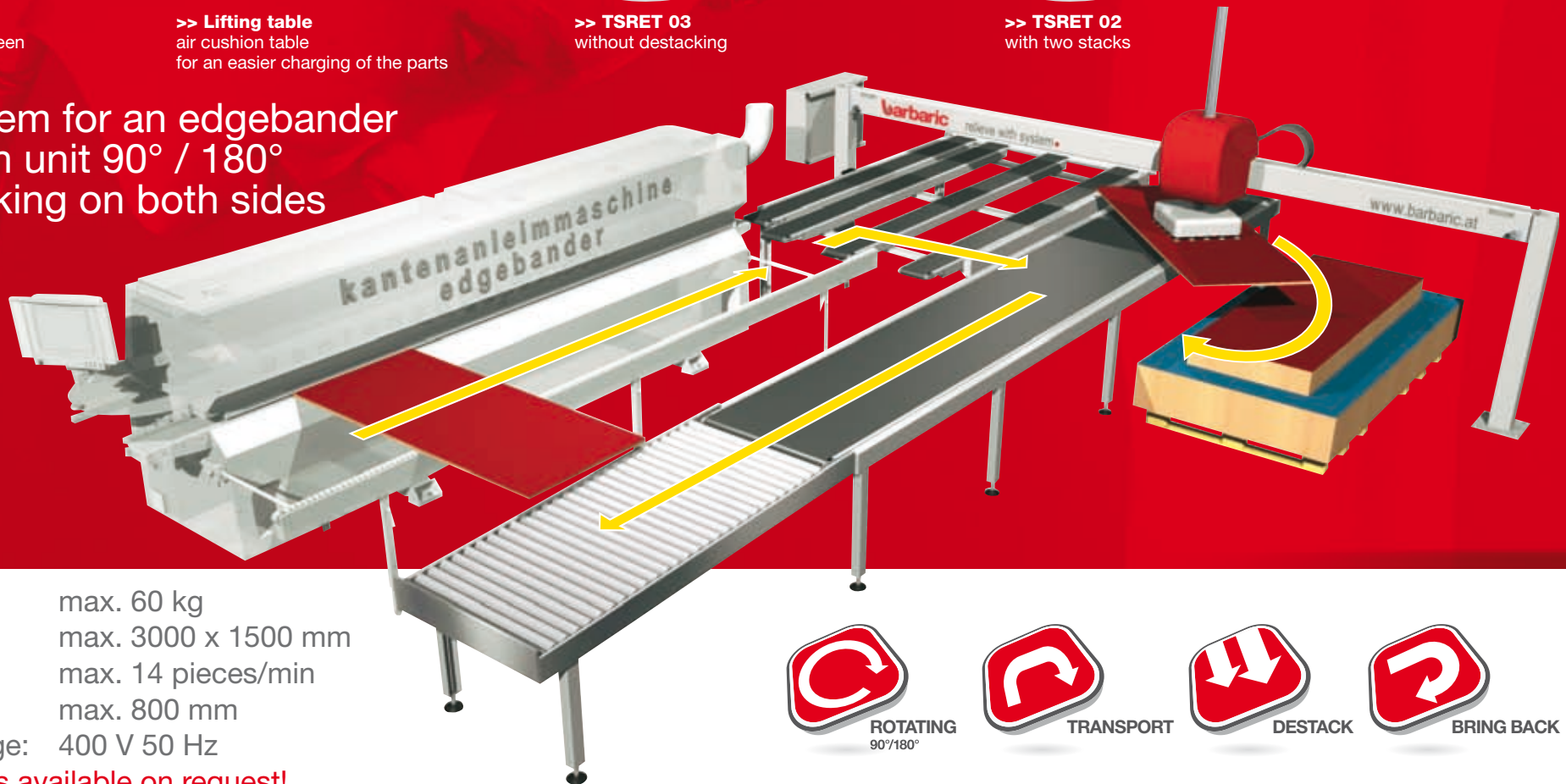


>> TSRET 03  
without destacking



>> TSRET 02  
with two stacks

Return system for an edgebander  
with rotation unit 90° / 180°  
and destocking on both sides



Load: max. 60 kg  
Panel size: max. 3000 x 1500 mm  
Clock cycle: max. 14 pieces/min  
Stack height: max. 800 mm  
Operating voltage: 400 V 50 Hz  
Special design is available on request!





- >> individual **solutions** for each size of your company
- >> intelligent **automation** – affordable and multifunctional
- >> enormous **potential in saving** space and staff costs
- >> **payback period** under a year possible
- >> highest possible level of **ergonomics**
- >> development and realization in close **collaboration** with the customer

# return systems

Barbaric GmbH, Pummererstraße 12, A-4020 Linz, Tel. +43 732 779 800  
Fax +43 732 779 800-DW 10, Mail: sales@barbaric.at, www.barbaric.at

**barbaric**  
relieve with system.