

# barbaric



## Automation for the timber industry



More information



[www.barbaric.at](http://www.barbaric.at)

# Solid Wood Storage SWS

## The innovation for solid wood handling

The Solid Wood Storage SWS combines many years of experience in the field of wood panel handling with innovation in design and software. Our crossbar is specially designed for the handling of solid wood.



## Fully automatic loading and unloading of glulam and structural timber

The SWS solid wood storage system is the optimal system for the storage of glulam and structural timber.

Solid wood logs are stored in stanchion compartments and can then be fed to cross-cut saws or joinery lines. Furthermore, there is the possibility of simple commissioning of customer packages or complex package formation after joinery.

These systems impress with their high flexibility. The stanchion compartments can easily be adapted to the desired log widths. Several logs can be stored in one layer per stanchion compartment. This significantly increases the performance of the machine compared to conventional one-dimensional storage.

The integration of heavy conveyor technology is essential for this type of systems. Chain conveyors or roller conveyors can be easily integrated into the warehouse.

Product video



>  
Storage location  
of a two-story facility

## Simple or multi-level solutions

The solid wood storage system SWS can be realized as a floor storage system but also as a two-storey version.

The standard solution is a warehouse on one level. Depending on the required performance of the system, one or two manipulators can be used.

The next step is a two-level facility. High hall heights are optimally used by adding a mezzanine floor to the system and the resulting upper area can also be used for storage.

This area can be used mainly for B and C goods or also for residual bars. The lower stacking heights even allow storage without stanchions.





# Inventory storage system

Automatic storage and picking of panels, HPL, doors, frames, flooring and plank packages



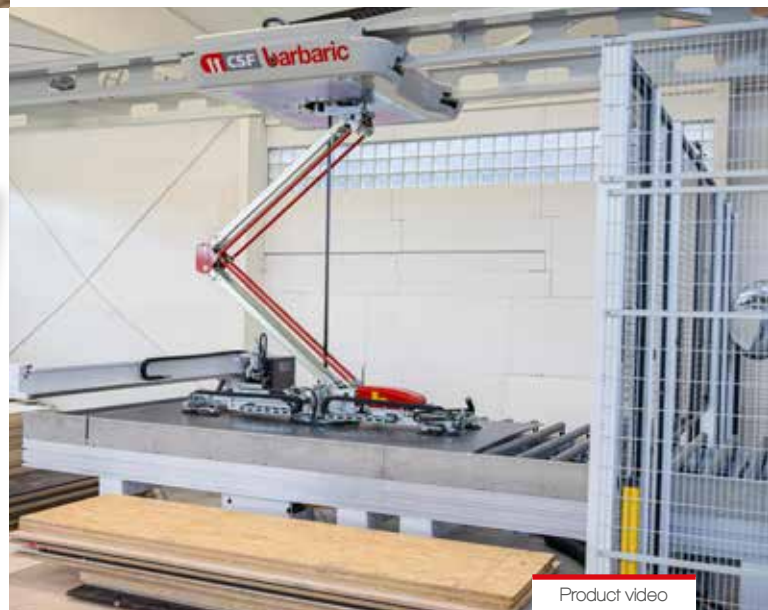
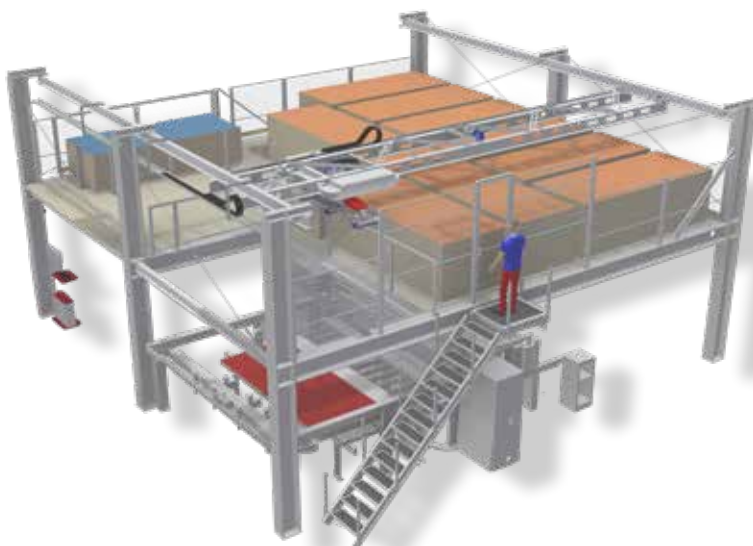
## Panel storage CSF Multilevel

Existing customer system in the door trade sector with 6 manipulators on 3 levels



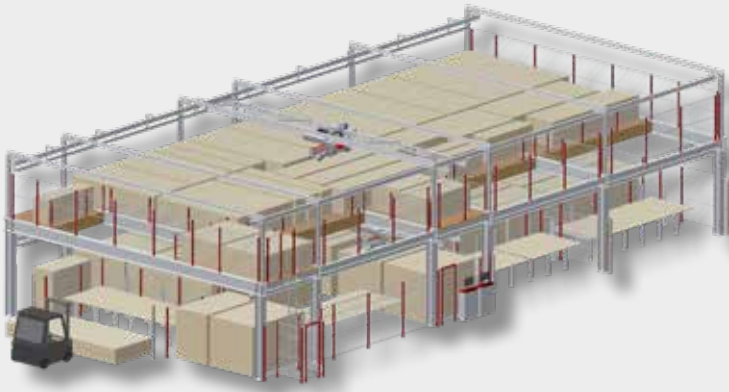
Industrial handling solutions – individually crafted for our customers – are just as much a specialty of Barbaric as the standard machines. We are proud to offer highly-customized machines that fit the customer's needs perfectly.

From the idea of the customer to constructive implementation, from production to assembly and finally the customer handover – you will be accompanied by an experienced team of technicians. The machines that we offer can be as complex as the customer wishes – we set no limit to your imagination.



Product video





## A solution out of one hand

We are proud to offer a complete handling solution:

- > Steel construction
- > Mezzanine Floor
- > Maintenance steps and ladders
- > Automatic Sliding Doors
- > Camera system (multiple angles)

## A highlight – our double-scissor lifting arm

The construction in a double-scissor configuration offers many advantages:

- > Lifting height of 4200 mm
- > Optimal storage efficiency through storage in upper level
- > Flexibility in space configuration
- > Adequate height of lower level with 3200 mm



## Machine feeding

No matter which kind of processing machine – any machining center can be placed on the ground floor. With a comfortable ground level height of 3200 mm the lower floor has a sufficient height for machine operation and even fork lift operation. The steel construction can also be used to mount dust extraction pipes or stationary installations.

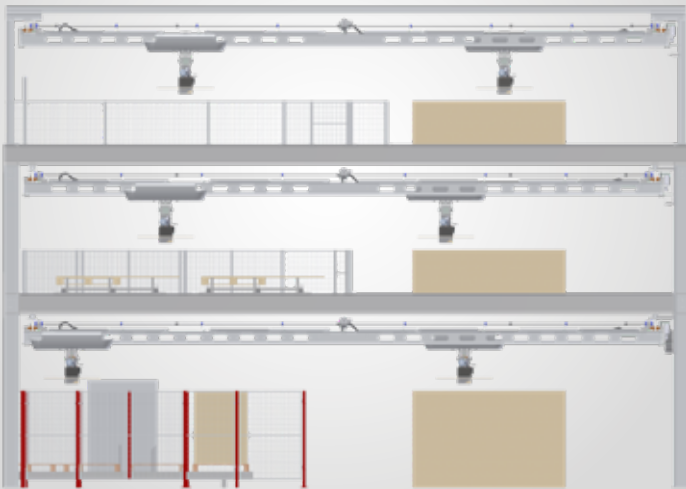


## Our services at a glance

- > Initial planning and concept creation
- > Analysis of customer data
- > Simulation with mathematical calculation models
- > Modern 3D Construction
- > Design Reviews with the customer
- > Multiple project meetings
- > Assembly and startup
- > Acceptance and performance testing
- > Service and Maintenance concept



### CSF Multilevel storage system on 3 levels with 6 manipulators



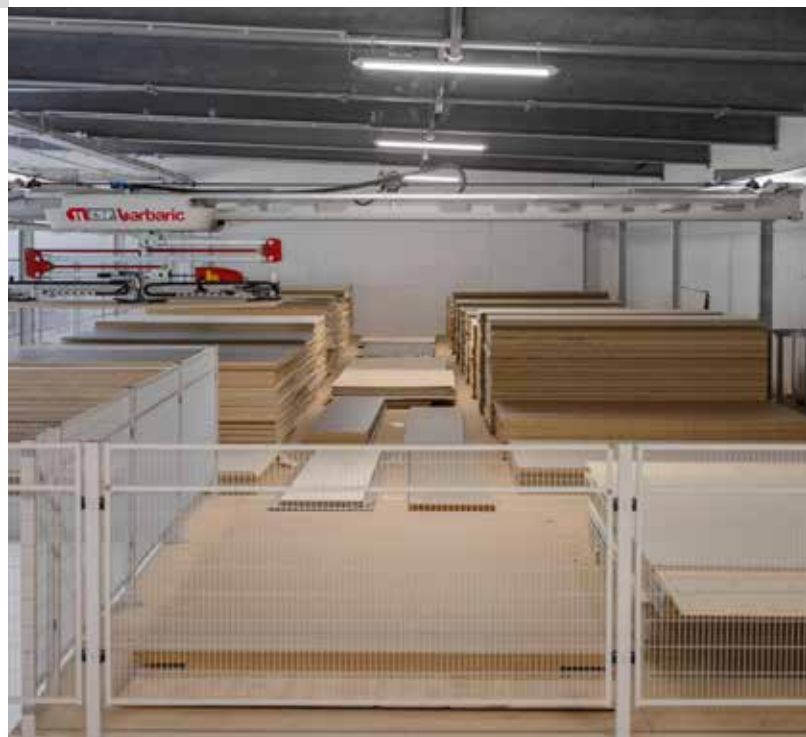
### Example of a customer project at a reputable motorhome producer

- > Planning and concept creation
- > Industrial CSF Multilevel Storage system with 2 manipulators
- > Storage foot print of 70 m x 10m
- > 1800 mm stacking height on ground level
- > 800 mm stacking height on upper level
- > Over 120 stacking positions (2500 x 1250 mm)
- > Three-shift-operation
- > Integration of conveyor technology
- > Label printing stations with dual-printer-heads for simultaneously labelling multiple label sizes
- > Integration of waste conveyor system
- > Communication to the ERP system of the customer
- > Backup- and failure plans

## Software solutions

Especially in the field of industrial handling solutions we emphasize a high level of communication between production machines:

- > Highly customized handling software
- > Communication between multiple production machines
- > Multiple User control terminals
- > Control terminals in production as well as office
- > Special software for controlling production jobs, communicating with customer ERP solution, etc.
- > Backup solutions



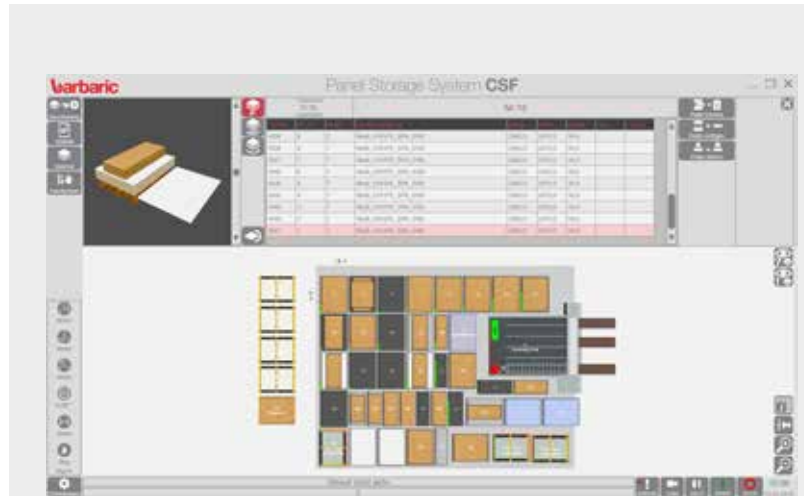
# Modern control and software combined with sophisticated safety systems

## Software

Connection to customer databases and ERP systems are implemented in the house on the basis of MySQL.

Integration options of

- > various databases
- > ERP systems
- > RFID systems
- > CAM systems
- > optimization systems



^ Software interface CSF Professional



^ Software interface CSF Industrial



^ Software solution especially for the timber trade

## Safety system

Our safety facilities comply with all local standards. In conjunction with other machinery, special safety concepts are also realized in agreement with the customer.

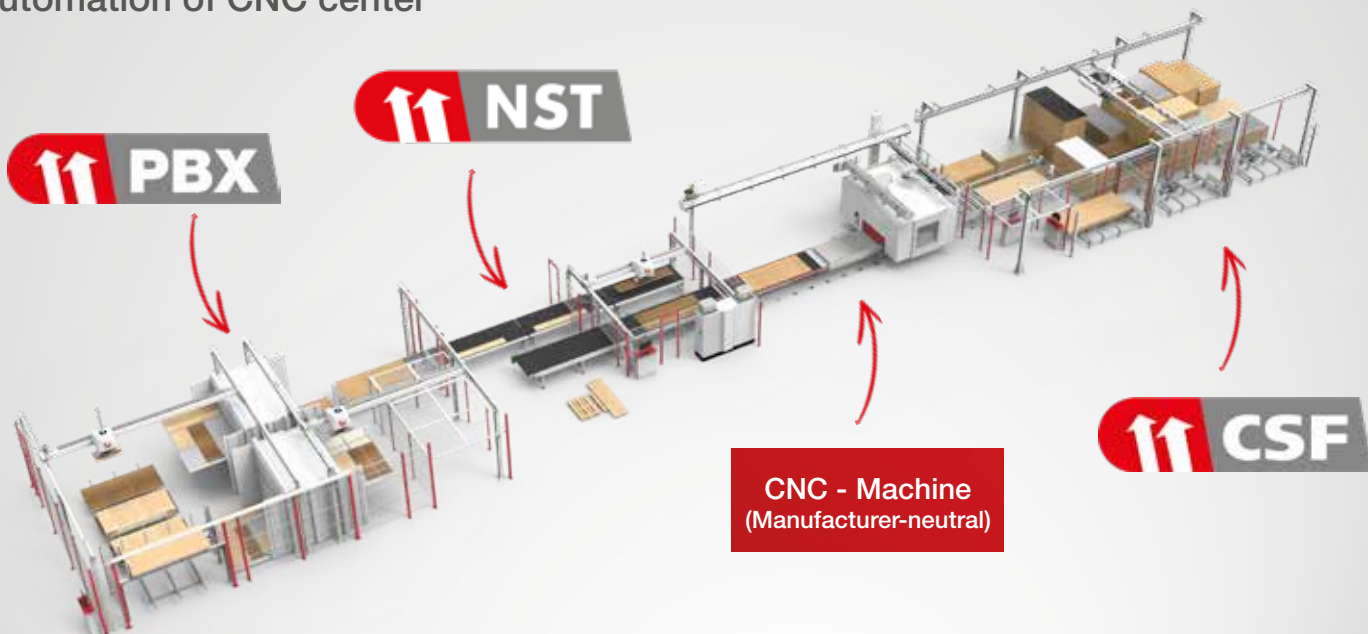
- > centralized safety PLC with online access
- > possibility of integration of various machines





# Your competent partner - also for panel processing

## Application example: Automation of CNC center



At Barbaric, our goal is to provide optimal solutions for every handling application. In addition to our automatic handling solutions in the field of panel and parts handling for commercial or industrial production lines, we also develop vacuum lifters for all remaining manual lifting processes.

### Automatic panel and part handling

Our intelligent solutions are used by many customers around the globe.

- > Panel storage systems
- > Feeding systems
- > Buffer storage
- > Return systems

are just a few examples of modern systems in the field of material handling. Each system in this area is built individually according to our customers' requirements, while existing components and proven concepts are used.

### Manual handling solutions

For customers in the wood and glass industry or for construction site use, we offer the suitable lifting equipment. Barbaric provides optimal handling solutions for safe and ergonomic lifting applications.

Manual vacuum lifters from Barbaric enable efficient handling of heavy panels or glass and save valuable time in production. Heavy lifting tasks can be performed effortlessly by just one operator. By purchasing suitable handling solutions, sickness-related absences can be minimized and attractive jobs can be created for the employees.



Product overview





*Ideas that move.*

## Headquarters

### **Barbaric GmbH**

Pummererstr. 12

4020 Linz, Austria

Phone: +43 732 779800

Email: office@barbaric.at

## Production site

### **Barbaric GmbH**

Lichtenberger Str. 37

4201 Eidenberg, Austria

## Sales locations



### **Barbaric GmbH Germany**

Lammgasse 7

75382 Althengstett, Germany

Phone: +43 732 779800

Email: office@barbaric.at



### **Barbaric North America Inc.**

741 Merritt Capital Drive, Suite 117

Wake Forest, NC 27587, USA

Phone: +1-919-425-2803

email: info@barbaric.us

www.barbaric.us

[www.barbaric.at](http://www.barbaric.at)



Image video

